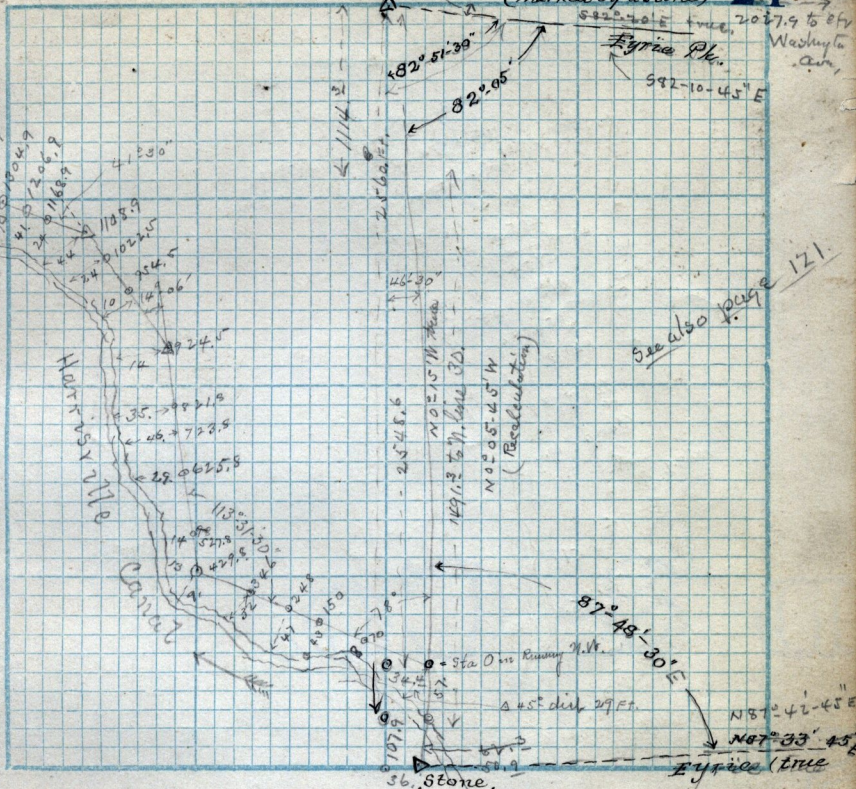


centre Sec. 5 T. 6 N. R. 1 W. (marked by a stone)

21
E = 32
Washgton
can.



See also page 121

Scale: Survey for Mrs. S. Smith $\dots\dots\dots$ chains per inch.

- 1585.9 canal 105.0 ft left.
- 1683.9 " 99. " "
- 1781.9 " 63 " "
- 1879.9 " 51 " "
- 1988.3 " 46 " "
- 2035.3 " 57. " left
- 2199.2 " 24 " "
- 2299.2 " 26 " "
- 2357.6 " to N. line 30 acres,

{ A 315+29.14 } city
{ B 79+82.67 } sta
from east.

Right 27°-10

Right 39°-37'-30

East line of 30 ac for ac 1491.3 ft long from stake on bank of canal.